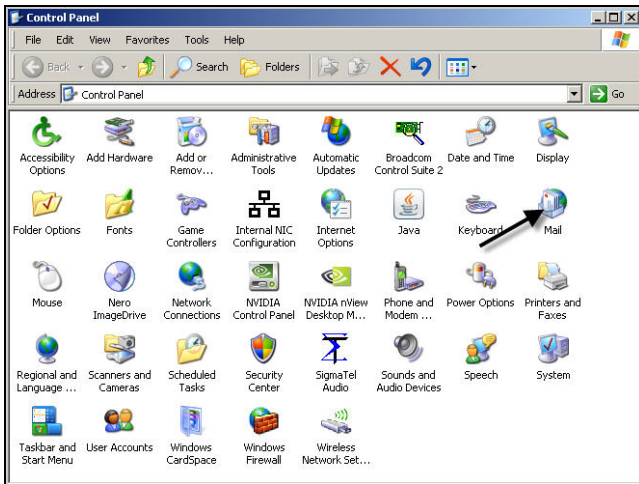




## NCDTech: Setup IMAP – Outlook 2003.

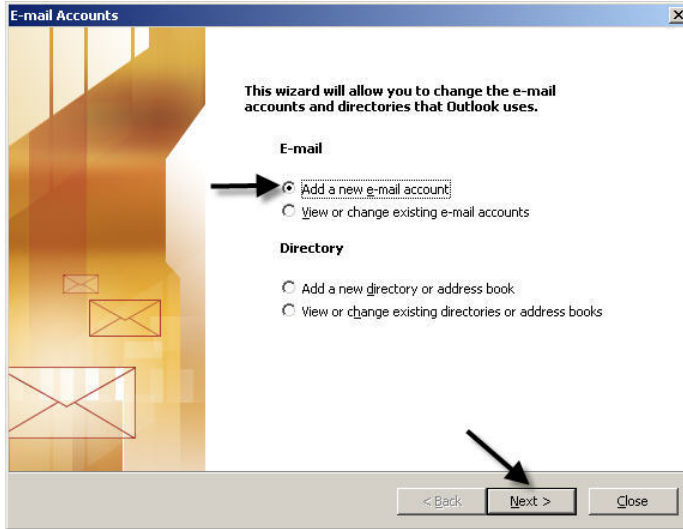
### Step 1: Open "MAIL"



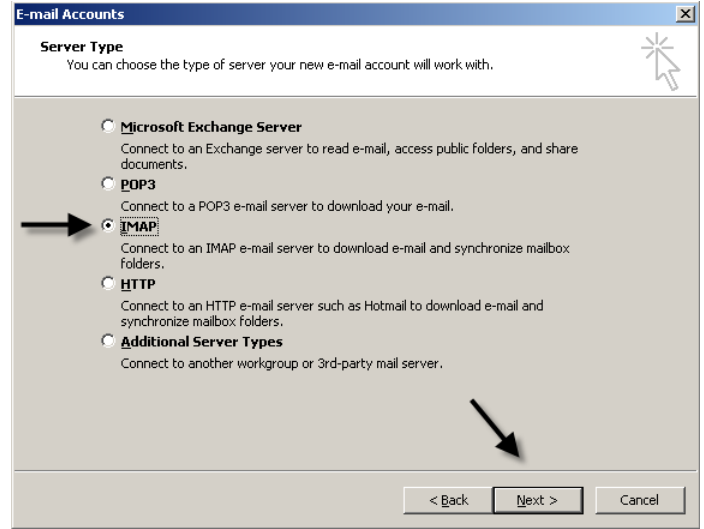
### Step 2: Click "E-MAIL ACCOUNTS"



### Step 3: Click "ADD A NEW E-MAIL ACCOUNT", then "NEXT"

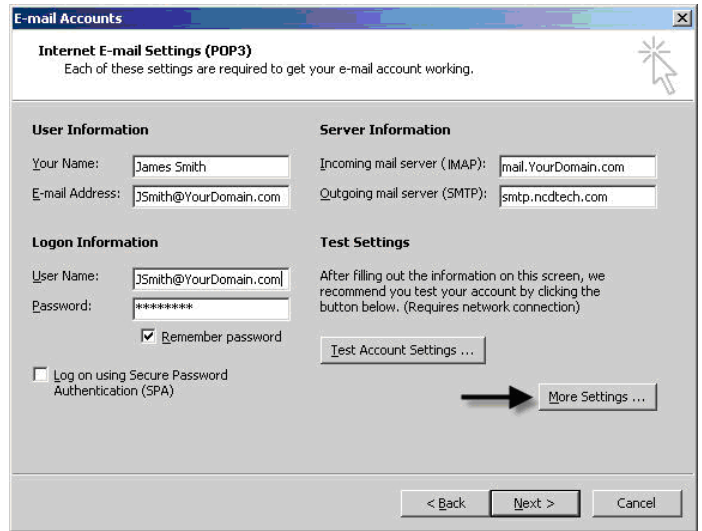
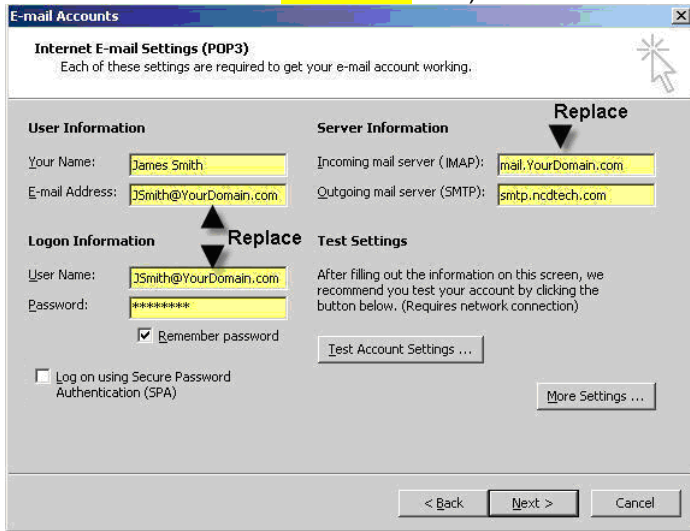


### Step 4: Click "IMAP", then click "NEXT"



**Step 5:** Fill in your information, replacing “YourDomain” with the domain name of your company (e.g., ours would be mail.NCDTECH.com)

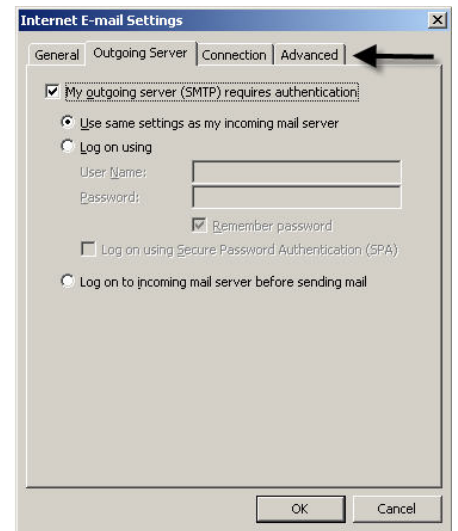
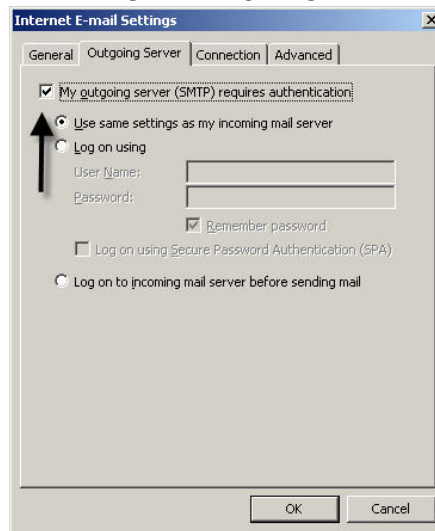
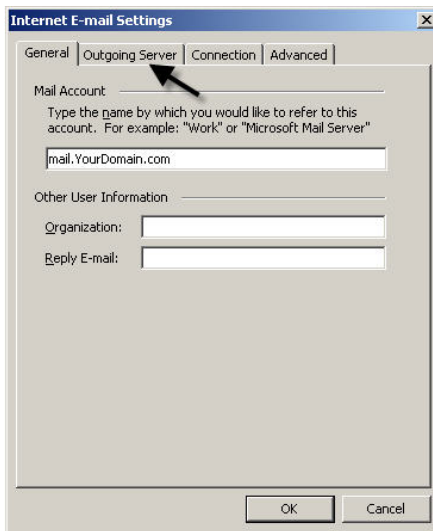
**Step 6:** Click “MORE SETTINGS”



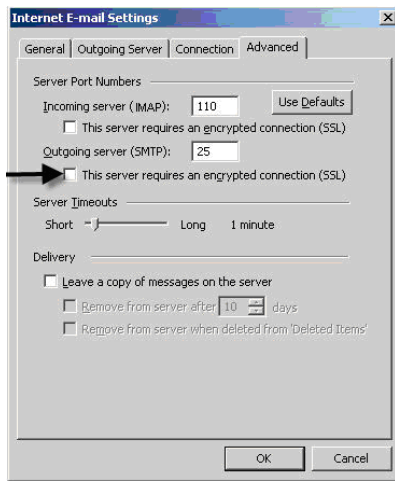
**Step 7:** Click the “OUTGOING SERVER” tab

**Step 8:** Check “MY OUTGOING SERVER (SMTP) REQUIRES AUTHENTICATION”

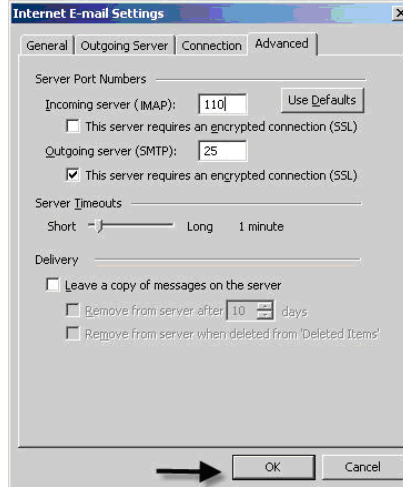
**Step 9:** Check the “ADVANCED” tab



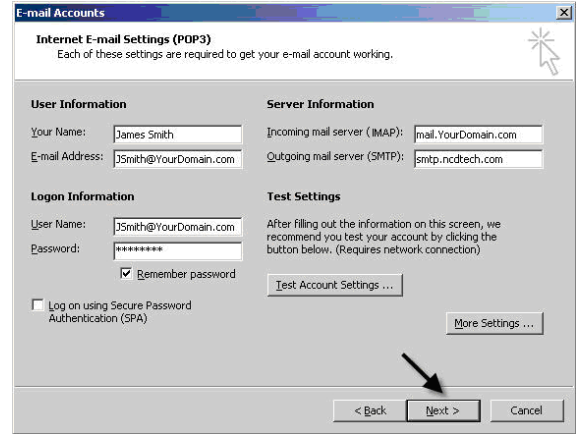
**Step 10: Check "REQUIRES AN ENCRYPTED CONNECTION (SSL)" box**



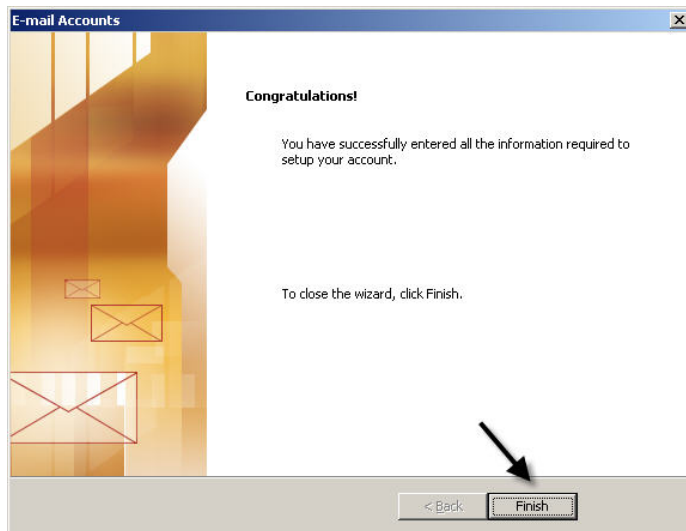
**Step 11: Click "OK"**



**Step 12: Click "NEXT"**



**Step 13: Click "FINISH"**



**Step 14: Click "CLOSE"**

