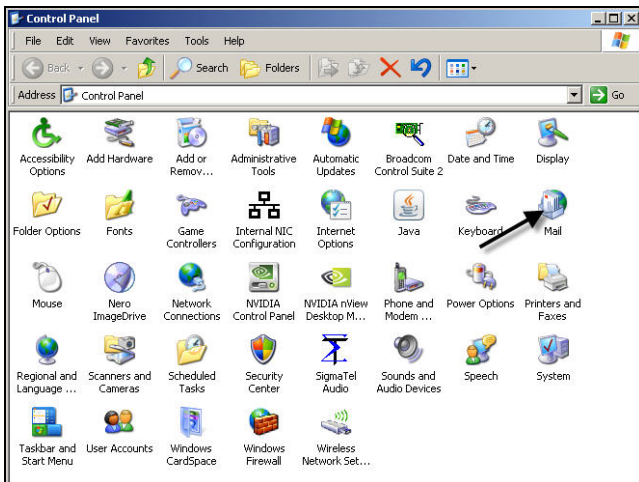




NCDTech: Setup POP3 - Outlook 2007

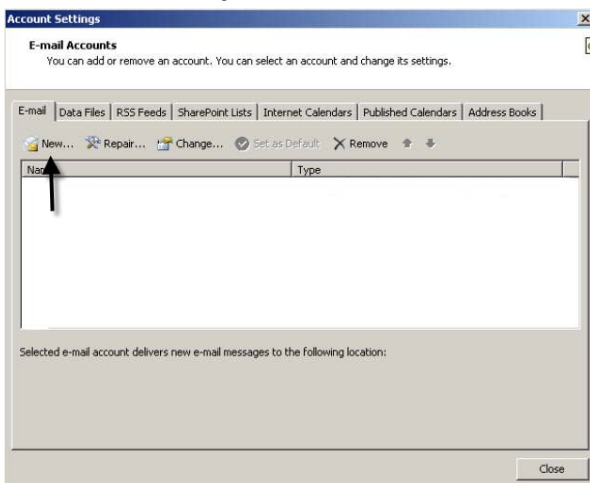
Step 1: Open "MAIL"



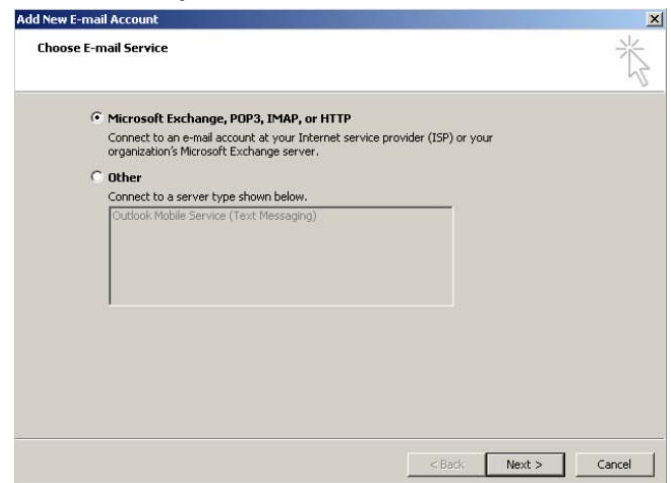
Step 2: Click "E-MAIL ACCOUNTS"



Step 3: Click "NEW"



Step 4: Click "POP3" then "NEXT"





Step 5: Check the box and click "NEXT"

Add New E-mail Account

Auto Account Setup

Your Name:

Example: Barbara Sankovic

E-mail Address:

Example: barbara@contoso.com

Password:

Retype Password:

Type the password your Internet service provider has given you.

Manually configure server settings or additional server types

< Back Next > Cancel

Step 6: Click POP3, then "NEXT"

Add New E-mail Account

Choose E-mail Service

Internet E-mail
Connect to your POP, IMAP, or HTTP server to send and receive e-mail messages.

Microsoft Exchange
Connect to Microsoft Exchange for access to your e-mail, calendar, contacts, faxes and voice mail.

Other
Connect to a server type shown below.

Outlook Mobile Service (Text Messaging)

< Back Next > Cancel

Step 7: Fill out the needed information, then "NEXT"

Add New E-mail Account

Internet E-mail Settings
Each of these settings are required to get your e-mail account working.

User Information
Your Name:
E-mail Address:

Server Information
Account Type:
Incoming mail server:
Outgoing mail server (SMTP):

Logon Information
User Name:
Password:
 Remember password

Require logon using Secure Password Authentication (SPA)

< Back Next > Cancel

Step 6: Fill out the needed information, then "NEXT"

Add New E-mail Account

Internet E-mail Settings
Each of these settings are required to get your e-mail account working.

User Information
Your Name:
E-mail Address:

Server Information
Account Type:
Incoming mail server:
Outgoing mail server (SMTP):

Logon Information
User Name:
Password:
 Remember password

Require logon using Secure Password Authentication (SPA)

< Back Next > Cancel



Step 7: Click the "OUTGOING SERVER" tab

Step 8: Check "MY OUTGOING SERVER (SMTP) REQUIRES AUTHENTICATION"

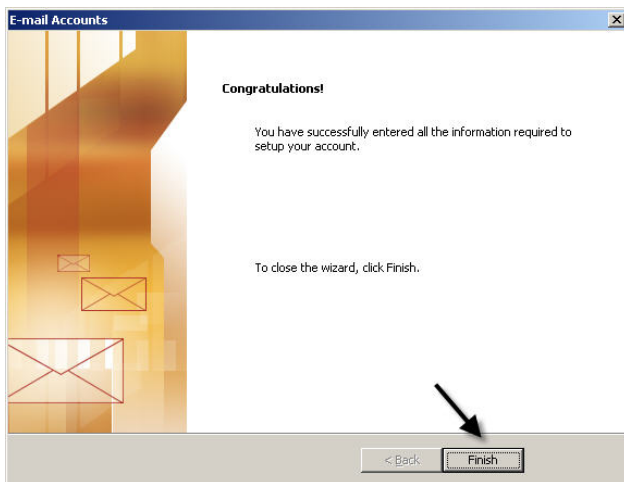
Step 9: Check the "ADVANCED" tab

Step 10: Click "OK"

Step 11: Click "NEXT"



Step 12: Click "FINISH"



Step 13: Click "CLOSE"

